



REPORT TO THE COMMUNITY 2023

EXPECT GREAT THINGS



OUR MISSION

To inspire people and communities to build and distribute charitable funds for good, for Adams County, for ever.

OUR VISION

To be a leading resource in promoting philanthropy among people of all means who wish to make a lasting and meaningful contribution to Adams County, and creating opportunities to develop and strengthen our communities.

OUR VALUES

- Accountability
- Transparency
- Confidentiality
- Compassion
- Inclusiveness
- Excellence in all things



**We expect great things for this community,
and we invite you to join us.**

MESSAGE FROM THE BOARD CHAIR AND PRESIDENT

Four decades ago, expecting great things, Jack Phillips approached the Rotary Club of Gettysburg with the inspired idea of a charitable foundation for Adams County.

Eleven months later this Community Foundation was created.

We have done our best to deliver on that optimistic beginning, working to make a difference in Adams County every day. We do this through collective philanthropy. Our donors entrust their charitable gifts to us, confident that we will invest those gifts wisely, award grants that honor their purpose, and safeguard their intentions for generations.

Now, in celebration of Jack's vision and the Community Foundation's 40th anniversary, we are launching a bold campaign to raise \$40,000,000 in endowment for Adams County. Attaining this campaign goal will triple the Community Foundation's annual grantmaking and strengthen scores of local nonprofits with individual endowments at the Community Foundation.

Today we continue to expect great things for this community, and we invite you to join us.

Cynthia Salisbury
Board Chair

Ralph M. Serpe
President and CEO



MAKING A DIFFERENCE IN ADAMS COUNTY

The Community Foundation is a charitable organization created by and for the people of Adams County and is governed by a board of private citizens. We exist to invest in Adams County and to support donors: individuals, families and businesses. The Community Foundation is Adams County's endowment builder. We manage a growing, permanent endowment that can address critical needs today and for generations to come.

IT STARTS WITH DONORS WHO CARE.

We listen to donors and their professional advisors to understand their charitable wishes as an important aspect of their life and legacy. Through contributions to existing charitable funds, or the establishment of new funds that reflect their charitable purpose, donors show that they expect great things today and for the future.

THE COMMUNITY FOUNDATION STEWARDS THE FUNDS.

We invest the charitable gifts entrusted to us with a long time horizon, committed to honoring each donor's purpose for generations to come.

THE RESULT IS LASTING BENEFIT FOR OUR COMMUNITY.

Representing our donors, past and present, we use their gifts to

- make grants to effective nonprofits,
- build designated endowments for nonprofits,
- push for changes in unfair policies or systems, and
- foster creative thinking and try out new ideas for all of Adams County.



The Gettysburg Welcome Center is one of 94 nonprofits benefitting from designated endowments at the Community Foundation.



Matt Crowner and Sharon Magraw of our Distribution Committee, which awards Adams County Grants.



The Community Foundation has been instrumental in the growth of the Adams County Farmers Market; the vibrant scene makes Bev Grazulewicz smile.



Glass recycling returns to Adams County thanks to a collaboration with Gettysburg Green Gathering, the County of Adams and a Fund for the Environment grant.



The Selby Family Fund and the Fund for Littlestown distribute grants each year to a host of Littlestown nonprofits including Alpha Fire Company.

The collective power of our donors makes it possible for us to make a difference in Adams County in many ways.

- We address community needs as they evolve.
- We enable nonprofits working regionally to extend their services into Adams County.
- We help remove barriers to self-sufficiency, paying for things that others can't or won't.
- We keep our eyes on the big picture of economic development.
- We support our increasingly diverse community.
- We use our relationships and influence to create change.
- We provide leverage to bring state and federal funding to Adams County.
- We promote endowment-building to help local nonprofits sustain themselves with a steady stream of operating capital.

SNAPSHOT OF 2023

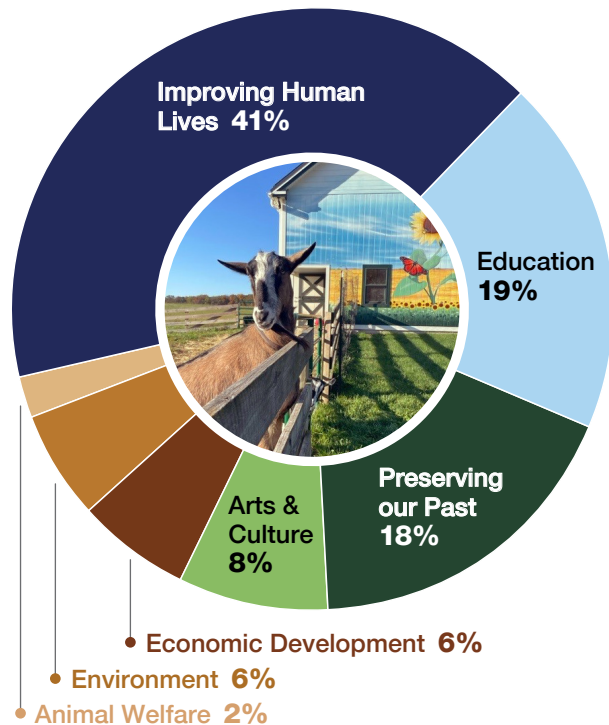
GRANTS AND SCHOLARSHIPS

Each year the Community Foundation uses the charitable funds entrusted to us by our generous donors to award grants and scholarships. Adams County Grants address the current pressing needs of our community. Other grants, as well as our scholarships, reflect the particular charitable interests of our donors or support specific organizations.

In 2023 the Community Foundation awarded grants and scholarships totaling \$3,540,429 to nonprofits and schools in Adams County and across the country. Of that total,

- \$217,000 was awarded in competitive community grants from The Fund for Adams County and other charitable funds created to address pressing current needs;
- \$685,121 from donor-advised funds and designated endowments supported specific nonprofits and causes prioritized by donors;
- \$196,194 went to colleges, universities and technical schools for students who won our competitive scholarship awards;
- \$2,442,014 flowed to the 114 nonprofits participating in the Giving Spree.

Overall, our grants and scholarships reach the full range of charitable activities. In 2023, that distribution looked like this:



Miss Pennsylvania Alysa Bainbridge and Nate Mares, chair of our Scholarship Committee.



Shirley Smith (R) with Autumn Lunsford, a grant recipient from the Shirley Smith Youth Service Fund for her mission trip to Costa Rica.

ADAMS COUNTY GRANTS

Adams County Grants are made possible by donors who give to The Fund for Adams County, the Community Foundation's growing permanent charitable endowment used to address the needs of the community today and prepare for the needs of tomorrow.

The Fund for Adams County distributes grants each year to improve conditions for people in need and the nonprofits that support them. In 2023 these included:

- Adams County Children's Advocacy Center — \$25,000
- Adams County Farmers Market — \$21,000
- Adams County Office for Aging — \$13,000
- Adams Rescue Mission — \$25,000
- Community Media of South Central PA — \$25,000
- Main Street Gettysburg — \$20,000
- Manos Unidas — \$22,000
- New Hope Ministries — \$25,000
- St. James Lutheran Church — \$16,000
- Shining Stars Therapeutic Riding Program — \$25,000

POLICY ADVOCACY

In addition to grants and targeted initiatives, the Community Foundation uses its relationships and influence to change our community for the better. Last year we celebrated after leading a statewide coalition to successfully end scholarship displacement across Pennsylvania. Our state legislature banned public colleges and universities from reducing a student's financial aid package when they receive a private scholarship like those from our scholarship fund donors.

Turning to another statewide policy issue, the Community Foundation is now engaged in advocating for a change to existing legislation that dictates the distribution of an estate when a Pennsylvania resident dies without a will and without family members to inherit. Such assets currently go to the state for its general use. Our proposed amendment would direct those assets to an endowed community grantmaking fund at a Pennsylvania community foundation, to provide a permanent charitable benefit to the local community of the deceased.



A grant to St. James Youth House supports remodeling a kitchen for Gettysburg C.A.R.E.S.



New Hope Ministries' financial literacy class is part of its overall workforce development efforts.



Dolly Greenholt and Rachel Stoner of Shining Stars Therapeutic Riding Program.



At the Giving Spree, Jacqueline White and Andrew Dalton of the Adams County Historical Society talk with Jean Green of the Lincoln Cemetery Project Association.

GIVING SPREE

At the 2023 Adams County Community Foundation Giving Spree, 2,505 local residents donated \$3.1 million dollars to support 114 county nonprofit organizations. Once again, Adams County distinguished itself in the world of local giving days, both in the dollars raised per capita and by hosting a live event for donors.

For the fourth year, the Community Foundation invited Giving Spree donors to designate some or all of their gifts as “forever gifts,” which are added to the designated endowment for that particular nonprofit at the Community Foundation. Once an endowment reaches \$10,000, a percentage is granted to the nonprofit each year. The Community Foundation’s inclusion of “forever gifts” in the Giving Spree empowers nonprofits to grow endowments that will sustain them for decades to come.

Giving Spree

November 7, 2024

ACCFGivingSpree.org



As always, three ways to make a gift:
drop it off, mail it in, give online

** New this year! **

Five drop-off locations

November 7, 2024

from 1:00 p.m. to 5:00 p.m.

drop off your Giving Spree gift in

Biglerville

East Berlin

Gettysburg

New Oxford

Littlestown



Donors browse nonprofit displays at the Giving Spree.



Volunteers Nate Mares, Bruce Bigelow, and Jim Kampstra are ready to receive curbside donations.



Two of the 2,505 donors who filled out donation forms to complete their Giving Spree gifts in 2023.

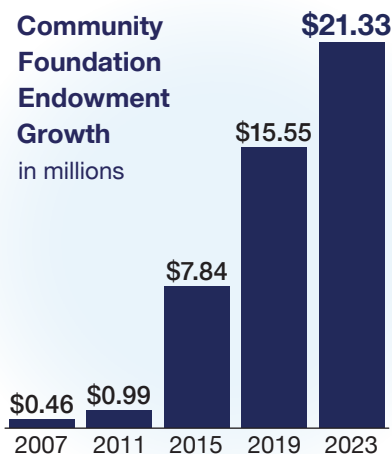
JOIN US!

40TH ANNIVERSARY CAMPAIGN

The Adams County Community Foundation is building a permanent charitable endowment to address the pressing needs of today and to secure the future of our community. We invite you to contribute to our 40th Anniversary Campaign, helping us reach our bold goal of \$40 million in current gifts and new charitable legacy intentions.

Reaching this goal will effectively triple the Community Foundation’s endowment, which today stands at \$22 million. That will enable us to triple our annual grants and increase the amounts distributed each year to small nonprofits with individual endowments at the Community Foundation. This Campaign represents a rising tide for all of Adams County.

Join us in building endowment for Adams County. Choose how your Campaign gift will be applied:



JACK PHILLIPS FOUNDERS FUND	FUND FOR ADAMS COUNTY	DESIGNATED ENDOWMENTS	LEGACY INTENTIONS
GOAL \$500,000	GOAL \$2,000,000	GOAL \$1,500,000	GOAL \$36,000,000
Our operating endowment sustains all that we do: community grantmaking, the Giving Spree, targeted initiatives, and policy advocacy.	This endowment provides the annual stream of Adams County Grants to nonprofits addressing our community’s changing needs—where it’s needed, when it’s needed.	Building individual endowments for Adams County nonprofits strengthens the future of each of them and for all of us.	New or increased legacy intentions for the Founders Fund, the Fund for Adams County, or any of our endowments will help secure our beloved community for the next 40 years and beyond.

To make an unrestricted bequest, we suggest the following sample language:

“I give and bequeath to the Adams County Community Foundation, a Pennsylvania not-for-profit corporation, the sum of \$_____ Dollars [or all the rest, residue, and remainder of my estate] to be used for the general purposes of the Community Foundation in the discretion of its Board of Directors.”

If you wish to restrict your bequest for a specific fund or purpose, please consult with the Community Foundation.

FUNDS OF THE ADAMS COUNTY COMMUNITY FOUNDATION

The Community Foundation is home to a wide variety of charitable funds created by donors for purposes ranging from specific, such as providing an annual grant to a favorite nonprofit, to broad, such as addressing the changing needs of Adams County.

We invite you to join us in building endowment for Adams County. Your gift to any new or existing endowment fund listed here, through November 21, 2025, will count toward our 40th anniversary campaign.

THE JACK PHILLIPS FOUNDERS FUND is an operating endowment which fuels our community grantmaking, targeted initiatives and advocacy.

FUNDS FOR ADAMS COUNTY provide flexible resources used to address critical issues in our community.

The Fund for Adams County
Crownier Fund for Adams County
Fred & Rita Diehl Fund for Adams County
Sidney S. Ehrhart & Sally Yelland Ehrhart Fund for Adams County
Ken & Lina Farabaugh Fund for Adams County
Eric and Suzanne Flynn Fund for Adams County
Ben Franklin Fund for Adams County
Thomas P. and Roberta C. Henninger Fund for Adams County
Henry/Manecke Fund for Adams County
Donald H. & Mildred C. Hershey Fund for Adams County
Gail & Peter Hull Fund for Adams County
M. C. Jones Fund for Adams County
Sharon Trew Cline Magraw Fund for Adams County
Thomas E. & Florence B. Metz Fund for Adams County
Jack and Bobbie Phillips Family Fund
John and Kim Phillips Fund for Adams County
Arthur & Muriel Rice Fund for Adams County
Charles Ritter Family Fund for Adams County
Cynthia & David Salisbury Fund for Adams County
Ralph Serpe & Bryan Tate Fund for Adams County
James D. & Eleanor B. Sheen Fund for Adams County
Luther & Lois Smith Fund for Adams County
George and Roberta Wood Fund for Adams County

FIELD OF INTEREST FUNDS are created to invest in a particular cause named by the donor, or to support collaborative initiatives of the Community Foundation.

Adams Community Emergency Fund
Adams County Fund for the Environment
Adams County Youth Recreational Sports Fund
At Home in Adams County Fund
Josette Boglio Fund
Cat-Federation Fund
Margaret Trew Cline Youth and Families Fund
Eichelberger-Stahle Fund
Barbara B. Ernico Fund for Leadership Development
The Fund for Littlestown
Helen Shields Hafer Memorial Fund
Hockley Family Fund
Linda Kranias Fund
Richard C. Michael Fund
Lester A. Musselman Fund
Shah Transportation Fund
Shirley Smith Youth Service Fund
Irene Thomas Memorial Fund
WellSpan Emergency Services Funds

DONOR-DESIGNATED FUNDS are established by donors to support one nonprofit or several, ensuring their annual giving continues for generations to come.

Adams County Arts Council Art Education Fund
Honoring Mel Shull
Adams County Arts Council Art Education Fund
Honoring Nanette Hatzes
Adams Electric Cooperative Project Helping Hand
Gary & Suetta Bechtel Fund
Bruce Bigelow & Julie Ramsey Fund
Becky Bollinger Aquatic Fund
William E. Bowers and Wayne D. Sentz
Designated Fund
Richard O. Brough Ag & Vo Tech Fund

Canner Trip Fund
 Claudia House Endowment
 Company K Fund
 Kathryn A. Cooke Memorial Fund
 Ruth W. Elder Memorial Social Studies Endowment
 Jeffrey W. Gabel Fund for “Carry On Laughing”
 Lilly Steinour Hafer Memorial Fund
 Berne C. Hart Technical Education Fund
 Gail and Peter Hull Fund
 William Iannello Endowment
 Lloyd C. and Miriam B. Keefauver Memorial Fund
 Rene and Gary M. Laird “Ain’t It Kool” Fund
 Neal T. Lippy Scholarship
 Oak Lawn Memorial Gardens Fund
 Oakside Community Park Endowment Fund
 The Oxford Club
 Larry R. & Janet M. Redding Fund
 Steve & Linda Renner Community Endowment Fund
 Charles Ritter Family Fund
 D. Lyda Rouzer Fund
 B. Josephine Seemann Memorial Fund
 Bernard, Mary and Richard Selby Family Memorial Fund
 C. William & Ann Settle Fund
 John and Mary Shuss Fund
 Richard E. Straup Memorial Fund
 Mayor William Troxell Fund
 Unger Family Music
 Richard L. & Ruth Jean Unger Fund
 Galen S. Wagner Fund
 J. William Warehime Fund
 Betsy & Hank White Endowment for GCT
 George H. & Roberta B. Wood Fund

DESIGNATED ENDOWMENTS are built with gifts from many donors and provide annual support to specific nonprofits year after year.

Adams Christian Prison Ministries
 Adams County Arts Council
 Adams County Children’s Advocacy Center
 Adams County Christian Academy
 Adams County Farmers Market
 Adams County Habitat for Humanity
 Adams County Historical Society
 Adams County Library System
 Adams County Literacy Council
 Adams County Office for Aging
 Adams County SPCA
 Adams Regional EMS
 Adams Rescue Mission
 Canner Education (Upper Adams)
 Children’s Aid Society
 Collaborating for Youth
 Community Media of South Central PA
 Conewago Valley Foundation for Education
 Dwight D. Eisenhower Society

Eagles Education (Bermudian Springs)
 East Berlin Area Community Center
 Evergreen Cemetery Gatehouse Preservation Fund
 Family First Health
 Forever Love Rescue
 4-H Clubs of Adams County
 Gettysburg Area Dollars for Scholars
 Gettysburg Area Recreation Authority
 Gettysburg Black History Museum
 Gettysburg Brass Band Festival
 Gettysburg C.A.R.E.S.
 Gettysburg Chamber Orchestra
 Gettysburg Children’s Choir
 Gettysburg Choral Society
 Gettysburg Civic Chorus
 Gettysburg Community Soup Kitchen
 Gettysburg Community Theatre
 Gettysburg Foundation
 Gettysburg Garden Club
 Gettysburg Green Gathering
 Gettysburg Hospital Foundation
 Gettysburg Montessori School
 Gettysburg Pride
 Gettysburg Welcome Center
 H.A.R.T. Center
 HACC Foundation
 Healthy Adams Bicycle/Pedestrian Inc. — HABPI
 Healthy Adams County
 Historic Gettysburg Adams County
 Hoffman Homes for Youth
 Holiday Family Outreach
 Interfaith Center for Peace and Justice
 John’s Meals
 Knights Education (Fairfield Area)
 Land Conservancy of Adams County
 Lincoln Cemetery Project Association
 Lincoln Fellowship of Pennsylvania
 Littlestown Area Historical Society
 Main Street Gettysburg
 Manos Unidas
 Mediation Services of Adams County
 Mission of Mercy
 Music, Gettysburg!
 New Hope Ministries
 Optimist Club of Gettysburg
 Pennsylvania Interfaith Community Program, Inc
 Project Gettysburg-Leon
 Project Hope
 Roots for Boots
 Ruth’s Harvest Gettysburg
 Ruth’s Harvest Littlestown
 Safe Home Adams County — YWCA Hanover
 Salvation Army — Gettysburg Unit
 SCCAP
 Seminary Ridge Historic Preservation Foundation
 Servant’s Inc.

Shining Stars Therapeutic Riding Program
 Special Olympics Adams County
 St. Francis Xavier Catholic School
 St. Teresa of Calcutta Catholic School
 Strawberry Hill Foundation
 Tender Care Pregnancy Centers
 Thaddeus Stevens Society
 Thunderbolt Education (Littlestown Area)
 Totem Pole Playhouse
 TrueNorth Wellness Services
 Unitarian Universalists of Gettysburg
 United Way of Adams County
 Upper Adams Food Pantry
 Vida Charter School
 Waldo's & Company
 Warrior Education (Gettysburg Area)
 Watershed Alliance of Adams County
 WWII American Experience
 YWCA Gettysburg & Adams County

DONOR-ADVISED FUNDS allow donors to suggest beneficiary nonprofits.

Adams County Bar Foundation Fund
 Adams County Medical Society & Alliance
 Stevens Alvarez Charitable Fund
 Peter A. Boving Endowment Fund
 Mary W. Brown Charitable Fund
 Loni and Frank Buck Family Fund
 Cathy and John Carson Fund
 Coach David Conaway Tribute Fund
 Delta Kappa Gamma — Omega Chapter Charitable Fund
 Carole Dutterer and Family Memorial Fund
 Douglas R. & Jacqueline Elder-Murren Endowment for Literacy for the LASD
 Kenneth M. & Constance Farabaugh Fund
 The Forward Fund
 Frederick C. & Susan Grasmick Guinn Fund
 Ronald L. & Carolyn Ketterman Hankey Fund
 Heartbeat By My Feet
 Jennifer Geesaman Roth Fund
 Plank Road Fund
 Nicholas C. Rapuano Memorial Fund
 Reinecker-Hendricks Family Fund
 Steve & Linda Renner Fund
 Rotary Club of Gettysburg Charitable Funds
 Cynthia & David Salisbury Fund
 Schwartz Family Fund
 LLT Rob Seidel Wounded Soldiers Fund
 Vincent Serpe Memorial Fund
 Dr. Satish and Rupal Shah Fund
 Smailliw Fund
 Jim Study Charitable Fund
 The Timmer Fund
 TWC Fund

Vinores Financial Services Community Charitable Fund
 John R. White Memorial Fund

SCHOLARSHIP FUNDS support educational opportunities for students.

Adams County Community Foundation Scholarship
 Adams County Chapter of PA Association of School Retirees
 Adams Electric Cooperative Scholarships
 Albert J. Lentz American Legion Post 202 Scholarship
 Sherry Krom Amig Memorial Scholarship
 Thomas E. Arnold Scholarship
 Henry Barberis III FFA Scholarship
 Biglerville Healthcare & Technical Scholarships
 Biglerville High School Business Award
 Joseph T. & Ivah R. Bollinger Scholarship
 Canner Awards Scholarship
 Mary Sue Cline Scholarship
 Conewago Valley Scholarships
 Emma Dutterer Scholarship
 Chad Dutterer Memorial FFA Scholarship
 Fairfield Alumni Association Scholarship
 Ray and Violet Flickinger Scholarship
 Gettysburg High School Class of 1964 Academic Award
 Dr. Charles H. Glatfelter Scholarship
 Walter P. and Anna Griest Memorial Scholarship
 Harold L. Griffie STEM Scholarship
 Berne C. Hart Technical Scholarship
 Thomas P. Henninger Scholarship
 Mabelle Hereter Memorial Scholarship in Music
 Eddie Horst Memorial Scholarship
 George B. Inskip Memorial Scholarship
 Kermit L. Jacoby Jr. Memorial Scholarship
 Dale R. King Memorial Scholarship
 Dr. Ronald Krablin Scholarship
 Mildred Walters Leader Scholarship
 Littlestown Rotary Club Scholarship
 Julie Ann Lochary Scholarship
 Michelle Rene Louey Memorial Scholarship
 J.W. Martin Memorial Math Scholarship
 Meghan T. McKinney Memorial Scholarship
 H. Edgar & Betty Jane Moul Scholarship
 Elizabeth Musselman Memorial Scholarship
 Luella Musselman Paul Scholarship
 Greg Richardson Athletic Scholarship
 Elizabeth Ferciot Roby Art Scholarship
 Dennis Runk, CPA (Class of 1969) and Family Scholarship
 Helen and Elton Ruth Scholarship
 Dalton Cole Schriver Memorial Scholarship
 Emory H. & Luther D. Snyder Littlestown Foundry, Inc. Scholarship
 Rosemary J. & Leon D. Tawney Scholarship
 Ray J. Wherley Tech/Trade Scholarship

2023 ANNUAL APPEAL CONTRIBUTORS

SUPPORTING OUR OPERATIONS AND GRANTMAKING IN ADAMS COUNTY

Dorothy Adams
Jennifer Aldrich
Mr. & Mrs. Bernard H. Anthony, Jr.
App Foundation
Deborah Barnes
Matthew & Luanne Battersby
Beth & Brad Becker
Jill Bemis
Robert & Janet Berkey
Doug & Kristin Berman
Ashley Bievenour
Bruce Bigelow & Julie Ramsey*
Peter Boving
Richard W. & Kathryn W. Boyer
Adam & Jessica Boyer
Brown Advisory*
Mary Brown
Scott & Cynthia Bucher
C.S. Davidson*
Lynn & Dorothy Cairns
Glenn & Ruth Cassell
Jim Chiaruttini
Janet Cole
William F. Coston, III
William & Michelle Crabbin
Lynda Crouse
Lexi & Matt Crowner
Destination Gettysburg*
Lisa & Barry Donohoe
David & Carolyn Doud
Brian & Lois Eader
Lois Edwards
Forry & Barbara Eisenhart
Carl R. & Julie M. Falk
Kenneth & Lina Farabaugh
FirstEnergy Foundation*
Eric & Suzanne Flynn
Kathryn & Michael Gelner
Terry & Betsy Gingrow
Edward S. Gobrecht
Charles & Anne Gomer
Beverly & Mark Grazulewicz
Sandra Grazulewicz
Curt Grim
Fred & Susi Guinn
Doug & Joanne Hahn
Linda Haines
Ryan & Anya Hanna
Bruce & Pat Hartman
Gary Hartman
Brian & Sheila Hartmann
J. Larry Hawk
Arthur & Diana Henne
Dirk Hill & Michelle Williams
Hazel Hilliard
Brad & Amy Hoch
Kay & Brad Hollabaugh
Mary Holmes
Gail & Peter Hull
Susan & Bob Iuliano
Elizabeth Johnides
Jonathan & Linsie Jonas
Jim & Kelly Kampstra
Kampstra Wealth Management*
William & Emily Knowles-Kellett
Knouse Foods Fund
Robert & Elizabeth Kengla
John D. Kuhn & Jan S. Knouse
Anna-Mae Kobbe
Walter & Janice Krug
Margaret G. Lady
J. Scott Hill & Nathalie Lebon
LeCompte Family Fund
Leese Family Charitable Fund
Roger & Barbara Liska
Fred & Fran Lorenzo
Christine A. Loveland
Christopher & Karen MacDonald
Monica Oss & J. Jay Mackie
Sharon C. Magraw*
Nathan & Laura Mares
Dr. & Mrs. Lex O. McMillan, III
Kathy Lee Miller
Warren Miller
Dan & Linnette Murray
Elida Murray & Jeffrey Franks
Larry Musselman
Fred & Tammy Myers
New Oxford High School
Student Council
Jack & Dorothy Nicholas
Eleanor Ott
Pella Rolscreen Foundation*
John & Kim Phillips*
Kathleen Platzer
Betty W. Pue
Ed & Dorothy Puhl
Charles & Deborah Raffensperger
Raffensperger, Martin &
Finkenbinder, LLC
Rich Randall
Larry & Janet Redding
Benjamin & Rita Rice
David Rice & Dora Townsend
Emily Rice-Townsend &
Danijel Lolic
Rice Fruit Company*
Janet & Ed Riggs
James & Susan Roach
Patricia Robinson
C. Kilburn Roulette
Cynthia & David Salisbury*
Charles Sawicki
Michael A. Schen
Karen Schloer
G. Radcliffe Schultz
Danny Sebright
Ralph Serpe & Bryan Tate
Dr. Satish & Rupal Shah
Jessica Shelleman
Wilmer & Megan Shreve
Joyce M. Shutt
Doris Skinkus
Carole J. Smith
Beverly A. Stanton
Thomas Stenhouse
Jeff Stout & Ron Overlid
Susan Swope
Ed & Karen Szoke
Steve & Pat Tallman
Linda H. Tate
Robert & Marilyn Teeter
Deborah Fox Thomas
Kenneth & Martha Tozzi
Earl & Constance Trump
J. William Warehime Foundation*
Christian Williams
Ella Williams
Linda & Duane Williams
David & Judy Young
Alan & Cindy Zepp

*2023 Giving Spree Sponsor!

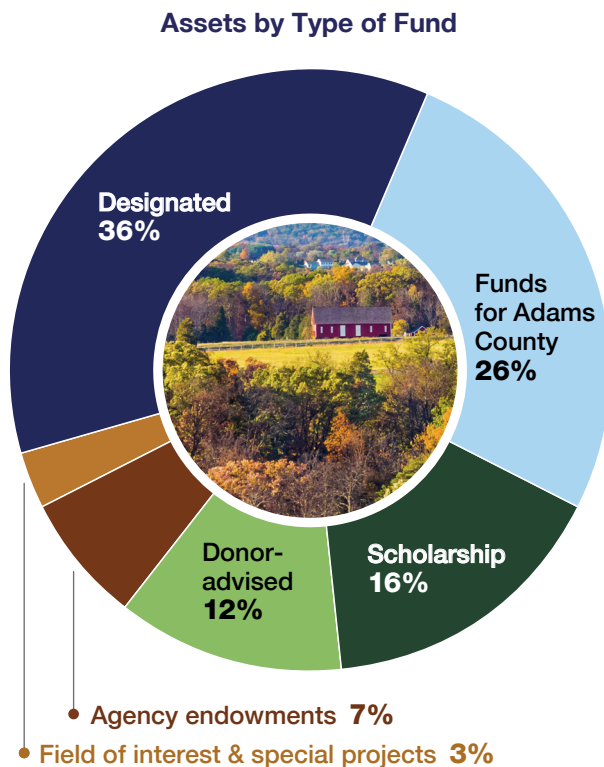
TREASURER'S REPORT

While many had predicted another tough year for the economy and financial markets, 2023 finished with a strong rebound following the 2022 downturn. The Community Foundation benefitted by remaining focused on the long-term, and the permanent investment pool, managed by Brown Advisory, posted a return of 15.9% net of investment fees and expenses. This in turn helped the Community Foundation to provide grants and scholarships of nearly \$3.5 million to benefit Adams County during the year.

I would like to take this opportunity to express my gratitude to the Investment & Finance Committee, Board, and Community Foundation staff for their support and trust while serving as Treasurer for the past eight years. Together, we have navigated diverse challenges and celebrated many successes, and it has been an honor and privilege to be part of such a wonderful organization and oversee the permanent endowment growing from \$8.4 million at the end of 2015 to nearly \$23 million to close out 2023.

Looking ahead, there continue to be many challenges and concerns for investors including interest rates and inflation lingering at elevated levels as well as elections in most major countries. However, I am confident the Community Foundation will remain steadfast in its mission to benefit Adams County for many years into the future.

Jim Kampstra, CIMA®, CFP®
Treasurer



Performance Summary

As of December 31, 2023

2023 Investment Return:	15.9%
Trailing five years:	9.9%
Inception (January 31, 2009) to date:	9.3%

Net of Investment Fees. Performance for periods greater than one year is annualized.

COMPARATIVE FINANCIALS

Assets	2023	2022
Cash and Cash Equivalents	\$ 1,389,226	\$ 1,817,458
Prepaid Expenses	835	733
Contributions Receivable	5,756	52,809
Accounts Receivable	8,647	6,419
Investments	21,334,926	18,104,602
Property, Equipment and Software	204,707	211,225
Total Assets	\$ 22,944,097	\$ 20,193,246
Liabilities and Net Assets		
Accounts Payable and Accrued Liabilities	\$ 15,679	\$ 17,880
Funds Held as Agency Endowments	1,599,968	1,335,738
Total Liabilities	\$ 1,615,647	\$ 1,353,618
Net Assets		
Unrestricted	\$ 21,328,450	\$ 18,839,628
Total Liabilities and Net Assets	\$ 22,944,097	\$ 20,193,246
Operating Support and Revenues		
Contributions	\$ 59,842	\$ 66,385
Investment Income	51,386	18,079
Grant Transfers from Endowments	21,689	60,301
Fund Administration Fee Revenue	328,709	304,703
Administrative Fee Revenue	13,477	14,237
Total Support and Revenue	\$ 475,103	\$ 463,705
Operating Expenses		
Program Services	\$ 231,046	\$ 216,848
Administrative	135,020	131,815
Development	81,968	115,346
Total Expenses	\$ 448,034	\$ 464,009
Change in Net Assets from Operations	\$ 27,069	\$ (304)
Total Contributions to Charitable Funds	\$ 3,632,534	\$ 4,045,396
Total All Grants and Scholarships	\$ 3,497,960	\$ 3,265,242
Net Assets, January 1	\$ 18,839,628	\$ 21,257,393
Net Assets, December 31	\$ 21,328,450	\$ 18,839,628

BOARD OF DIRECTORS



Cynthia Salisbury
Chair
Gettysburg, PA
RETIRED BUSINESS
OWNER



Janet Morgan Riggs
Vice Chair
Gettysburg, PA
RETIRED GETTYSBURG
COLLEGE



Beth Becker
Secretary
Littlestown, PA
EDUCATION



Jim Kampstra
Treasurer
Fayetteville, PA
INVESTMENT
MANAGEMENT



Matt Battersby
Fairfield, PA
LAW



Peter Boving
Fairfield, PA
RETIRED EMERGENCY
SERVICES



James Dunlop
Gettysburg, PA
WEALTH MANAGEMENT



Patricia Green
Littlestown, PA
PUBLIC RELATIONS



Sharon C. Magraw
Gettysburg, PA
COMMUNITY MEMBER



Nathan Mares
Gettysburg, PA
HOSPITALITY/TOURISM



Taurean Moses
Gettysburg, PA
LAW



John S. Phillips
Gettysburg, PA
RETIRED LAW



Ed Puhl
Gettysburg, PA
LAW



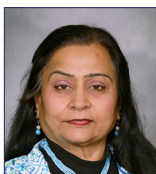
Julie Ramsey
Gettysburg, PA
EDUCATION



Emily Rice-Townsend
Gettysburg, PA
AGRIBUSINESS



Danny Sebright
Biglerville, PA
GOVERNMENT



Rupal Shah
Gettysburg, PA
COMMUNITY MEMBER



Ed Szoke
Gettysburg, PA
RETIRED MEDICAL



Ralph M. Serpe
President & CEO
Ex-officio

COMMITTEES

Audit

John S. Phillips,* Chair
Charles “Skip” Hockley
Jim Kampstra*
Ed Szoke*

Development

Ed Puhl,* Chair
Matt Battersby*
Peter Boving*
Kenneth M. Farabaugh, Jr.
Patricia Green*
Cynthia Salisbury*

Distribution

Ed Szoke,* Chair
Matt Crouner
Sharon C. Magraw*
Nathan Mares*
Julie Ramsey*
Janet Morgan Riggs*
Danny Sebright*

Executive

Cynthia Salisbury,* Chair
Beth Becker*
Jim Kampstra*
Sharon C. Magraw*
Nathan Mares*
Ed Puhl*
Emily Rice-Townsend*
Janet Morgan Riggs*
Ralph M. Serpe*
Ed Szoke*

Investment & Finance

Jim Kampstra,* Chair
Laura Becker
Loni Buck
Jim Dunlop*
Terry Gingrow
John S. Phillips*
Rupal Shah*

Fund for Littlestown

Beth Becker*
Patricia Green*
Tom Paholsky
Jeremy Shultz

Fund for the Environment

Cynthia Salisbury,* Chair
Matt Battersby*
Peter Boving*
Emily Rice-Townsend*

Nominating

Emily Rice-Townsend,* Chair
Janet Morgan Riggs*
Cynthia Salisbury*

Scholarship

Nathan Mares,* Chair
Peter Boving*
Matt Crouner
Mary Sue Cline
Harold Griffie
Fred Guinn
Walt Jones
Julie Ramsey*
Jim Roach
Jill Sellers

FORMER BOARD MEMBERS

Gregory Allen
Ronald E. Bailey
Bruce Bigelow
Loni Buck†
Judith Butterfield
Jim Chiaruttini
Emried D. Cole, Jr.
J. Mark Cropp
Matt Crouner
Eric Falk
Kenneth M. Farabaugh, Jr.†
Donald F. Ferrara
Rich Finkenbiner
John Fofanah
Cynthia Ford†
Anne Gallon

Terry Gingrow†
Curt Grim
Frederick C. Guinn†
Carol Heiser
Erik Hendricks
Nancy Hendricks
Charles “Skip” Hockley
Kay Hollabaugh
Paul K. Hoover, Jr.
Gail J. Hull†
Elizabeth Silbaugh Johnides
Walt Jones
Lance Landauer‡
Laverne L. Leese
Kevin McCarty
Judi McGee

Richard Michael‡
Warren Miller
Larry Musselman
Alan Kim Patrono
Michael Pavlovich‡
Alice Paxson
Herbert A. Phelps
❖ John W. “Jack” Phillips†‡
Kenneth W. Pool
Kilburn Roulette
Stacey Schlosser
Dr. James Sheen‡
Patricia B. Schwartz
David Thomas
Catherine Cresswell Washburn
Duane Williams

*Member, Board of Directors

❖ Founder † Former Chair ‡ We remember

STAFF



Heidi Acker
Scholarship and Office
Administrator



Lisa Donohoe
Director of Community
Programs



Beverly Grazulewicz
Special Projects Coordinator



Bruce Hartman
Chief Financial Officer



Ralph M. Serpe
President & CEO

Accounting Support
Sue Spangler
Raffensperger, Martin &
Finkenbiner

Auditors
Boles Metzger Brosius
and Walborn

Communications Consultant
Gigi Casey Wirtz

Graphic Designer
Jennifer Dyer Graphic Design

Investment Advisors
Brown Advisory

IT Consultant
Jeffrey Baum
Total Tech Solutions

Annual Report Sponsor

KAMPSTRA
WEALTH MANAGEMENT

We invite you to contact us and learn more

Phone: 717-337-0060

Email: info@adamscountycf.org

Website: www.adamscountycf.org

Facebook: @adamscountycf

LinkedIn: bit.ly/adamscountycf-li

Photography © John Beatty: cover, page 2. Lisa Donohoe: pages 3, 5. Donna Spicer, page 6. Appalachianviews, page 12. Leer Photography, pages 14, 16. Printing: Graphcom.

DEPEND ON US

The Adams County Community Foundation adheres to the highest standards of transparency and management practices for community foundations.

In each of the last five years, the Community Foundation has been certified under National Standards for Community Foundations overseen by the Council on Foundations. We proudly display the National Standards seal.



The Community Foundation is honored to participate with like-minded institutions and businesses to further our mission. These networks include:

Council on Foundations
National Scholarship Providers Association
Pennsylvania Community Foundation Association
Pennsylvania Association of Nonprofit Organizations
At Home in Adams County
Adams Economic Alliance
The Chamber of Gettysburg & Adams County
New Oxford Chamber of Commerce





ADAMS COUNTY
COMMUNITY FOUNDATION

25 South 4th Street ■ Gettysburg, PA 17325

717-337-0060

www.adamscountycf.org

info@adamscountycf.org



Visit us at
adamscountycf.org

CFNS
ACCREDITED
FOUNDATION